



AVK REPICO® - REPAIR COUPLING WITH TWO LOCKS LONG VERSION HIGH PRESSURE (RSDFL)

747/12-112

For all pipes, stainless steel 316, NBR

AVK's Repico® product program consists of stainless steel pipe couplings and repair couplings for pipe diameters from DN 15 up to DN 2000. The Repico® range offers a quick and simple connection solution for all pipes with possibility of angular deflection and easy handling due to the compact and light weight design.

Product description:

Repico® RSDFL - Repair coupling with two locks long version high pressure to repair all pipes. For water and wastewater - 25° C up to +80° C

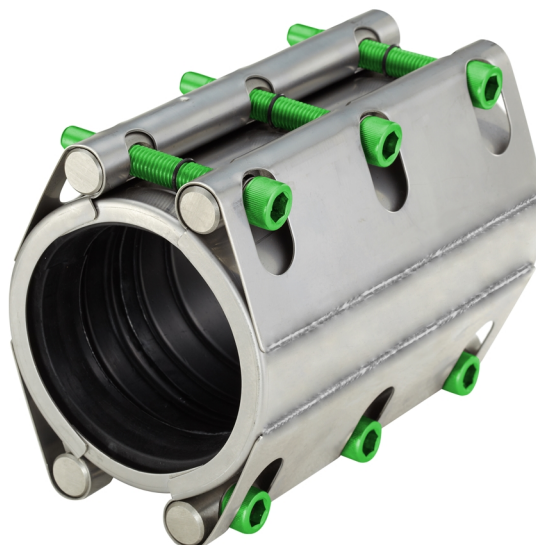
Test/Approvals:

Material approvals:

- EN 681-1
- EN 682 (DVGW)
- XP P 41-250 (ACS)
- AS/NZS 4020

Features:

- Repair coupling with two locks long version high pressure provides a repair solution for all pipes that needs to be repaired permanently or temporarily. Available in DN 80-1000
- Progressive sealing
- Available in different lengths from 200 up to 250 mm
- Easy installation by use of a torque wrench, limited space required for installation due to compact design
- Pressure range up to 42,7 bar (620 PSI) depending on size
- Made of stainless steel 316
- Green PTFE coated bolts
- Light weight

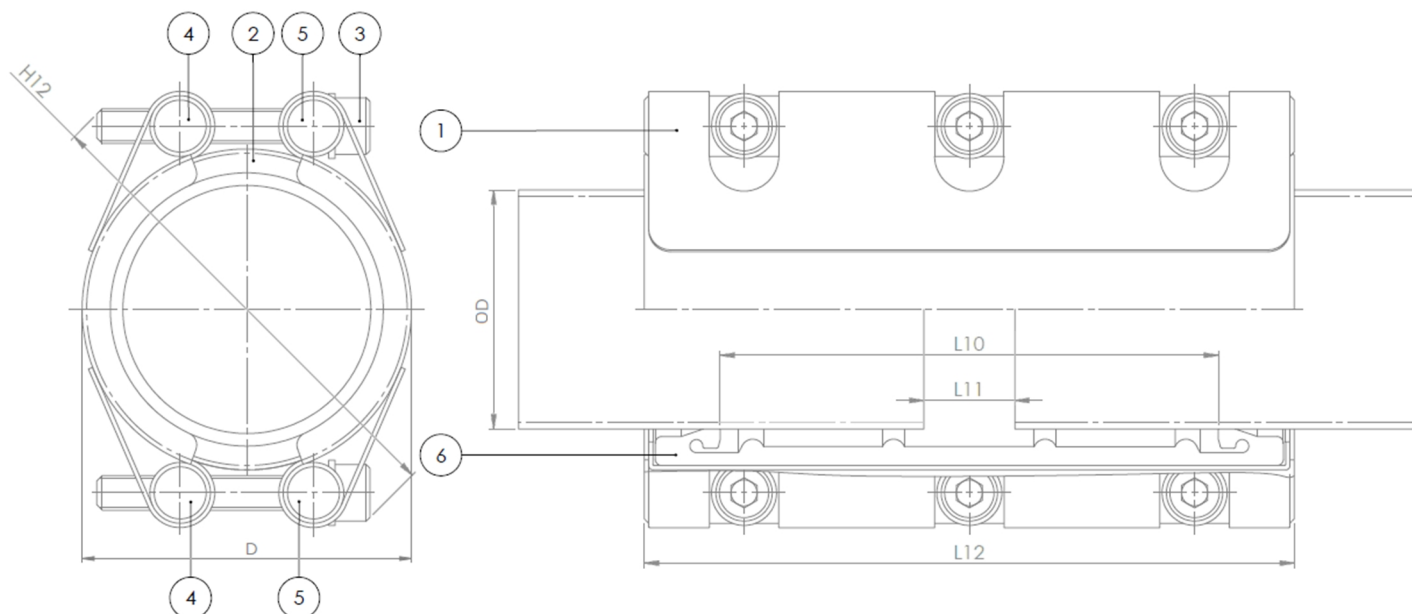


Expect ... **AVK**

AVK REPICO® - REPAIR COUPLING WITH TWO LOCKS LONG VERSION HIGH PRESSURE (RSDFL)

747/12-112

For all pipes, stainless steel 316, NBR



Component list:

1. Body	Stainless steel 316	4. Nut	Stainless steel 316
2. Side plate	Stainless steel 316	5. Washer	Stainless steel 316
3. Bolt	Stainless steel 316 / PTFE coated	6. Sealing	NBR rubber

Components may be substituted with equivalent or higher class materials without prior notification.

Reference nos. and dimensions:

AVK ref. no.	Tolerance mm	Pipe diam. mm	Working Pressure / bar	D mm	H12 mm	L10 mm	L11 mm	L12 mm	Bolts (no x M x L)	Torque Nm	Theoretical weight / kg
747-12-0089-112	88,0 - 92,0	88,9	42	110	137	150	15	201	6XM12X70	30	4.0
747-12-0101-112	100,0 - 104,0	101,6	42	123	150	150	15	201	6XM12X70	30	4.2
747-12-0104-112	102,0 - 106,0	104,0	42	126	153	150	15	201	6XM12X70	30	4.2
747-12-0106-112	105,0 - 108,0	106,3	42	128	155	150	15	201	6XM12X70	30	4.2
747-12-0108-112	106,0 - 110,0	108,0	42	130	157	150	15	201	6XM12X70	30	4.2
747-12-0114-112	113,0 - 118,0	114,3	42	136	163	150	15	201	6XM12X70	30	4.3
747-12-0139-112	138,0 - 142,0	139,7	42	164	194	150	15	203	6XM12X80	40	6.0
747-12-0141-112	139,5 - 144,0	141,3	42	166	196	150	15	203	6XM12X80	40	6.0
747-12-0159-112	156,0 - 161,0	157,7	42	182	212	150	15	203	6XM12X80	40	6.3
747-12-0165-112	164,0 - 168,0	165,2	42	190	220	150	15	203	6XM12X80	40	6.5
747-12-0168-112	166,0 - 170,0	168,3	42	193	223	150	15	203	6XM12X80	40	6.5
747-12-0216-112	214,0 - 219,0	216,3	32	245	292	185	15	252	6XM16X120	100	16
747-12-0219-112	216,5 - 222,0	219,1	32	248	295	185	15	252	6XM16X120	100	16
747-12-0267-112	262,0 - 270,0	267,4	26	296	343	185	15	252	6XM16X120	120	17
747-12-0273-112	270,0 - 277,0	273,0	26	302	349	185	15	252	6XM16X120	120	17
747-12-0318-112	316,0 - 323,0	318,5	26	348	394	185	15	252	6XM16X120	120	18
747-12-0323-112	322,0 - 329,0	323,9	26	353	399	185	15	252	6XM16X120	120	18
747-12-0355-112	352,0 - 361,0	355,6	26	385	441	185	15	252	6XM16X140	120	19
747-12-0406-112	402,0 - 411,0	406,4	26	435	492	185	15	252	6XM16X140	120	20
747-12-0457-112	453,0 - 462,0	457,2	25	486	543	185	15	252	6XM16X140	120	22
747-12-0508-112	504,0 - 513,0	508,0	18	537	594	185	15	252	6XM16X140	120	23
747-12-0558-112	555,0 - 564,0	558,8	18	588	644	185	15	252	6XM16X140	120	24
747-12-0609-112	605,0 - 615,0	609,6	16	639	695	185	15	252	6XM16X140	120	26

The designs, materials and specifications shown are subject to change without notice due to the continuous development of our product range.

**AVK REPICO® - REPAIR COUPLING WITH TWO LOCKS LONG VERSION
HIGH PRESSURE (RSDFL)****747/12-112****For all pipes, stainless steel 316, NBR****Reference nos. and dimensions:**

AVK ref. no.	Tolerance mm	Pipe diam. mm	Working Pressure / bar	D mm	H12 mm	L10 mm	L11 mm	L12 mm	Bolts (no x M x L)	Torque Nm	Theoretical weight / kg
747-12-0660-112	654,0 - 666,0	660,4	16	689	746	185	15	252	6XM16X140	120	27
747-12-0711-112	705,0 - 717,0	711,2	14	740	797	185	15	252	6XM16X140	120	28
747-12-0762-112	756,0 - 768,0	762,0	14	791	848	185	15	252	6XM16X140	120	29
747-12-0812-112	806,0 - 818,0	812,8	13	842	898	185	15	252	6XM16X140	120	31
747-12-0863-112	857,0 - 869,0	863,6	12	893	949	185	15	252	6XM16X140	120	32
747-12-0914-112	906,0 - 920,0	914,4	11	943	1000	185	15	252	6XM16X140	120	33
747-12-1016-112	1010,0 - 1022,0	1016,0	10	1045	1102	185	15	252	6XM16X140	120	36