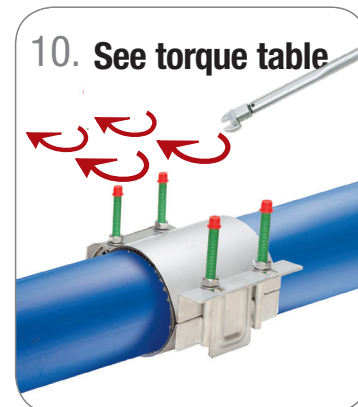
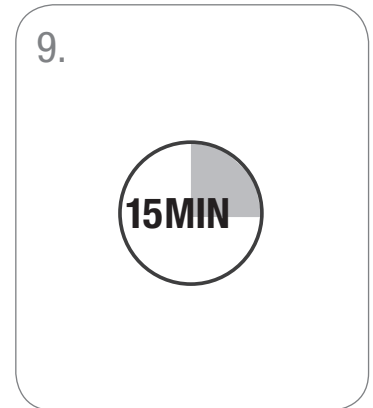
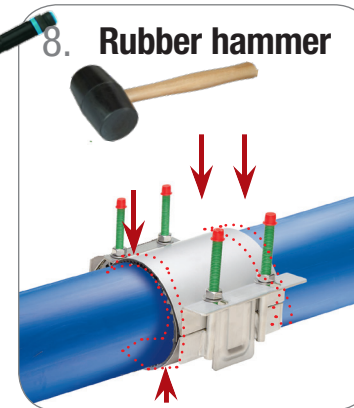
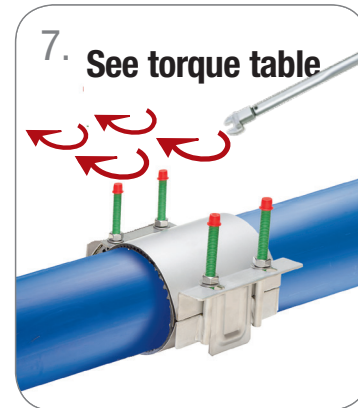
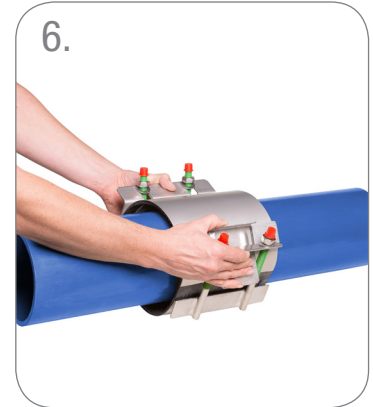
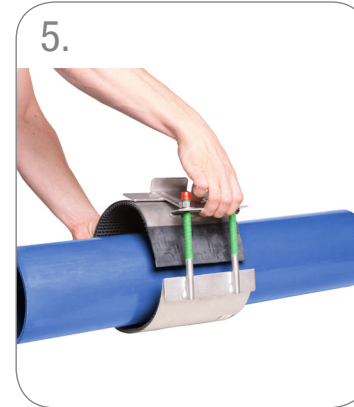
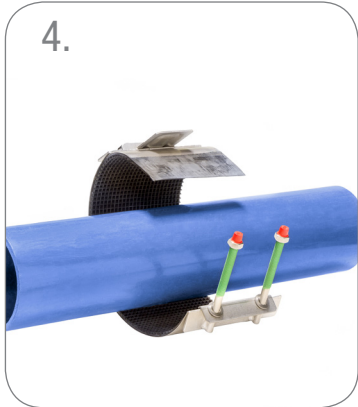




## Repair clamp type FS20 Series 748/02, 748/22, 748/32

**Note: Not recommended for total break**



| Torque table                                     |            |        |
|--|------------|--------|
| Bolts  | Torque     | Wrench |
| M14  | 70-90 Nm   | 22     |
| M16  | 100-120 Nm | 24     |
| Recommendations:                                 |            |        |
| - Use a rubber hammer, to improve rubber setting |            |        |
| - Turn nuts in steps of 20 Nm                    |            |        |
| - Cross tightening                               |            |        |